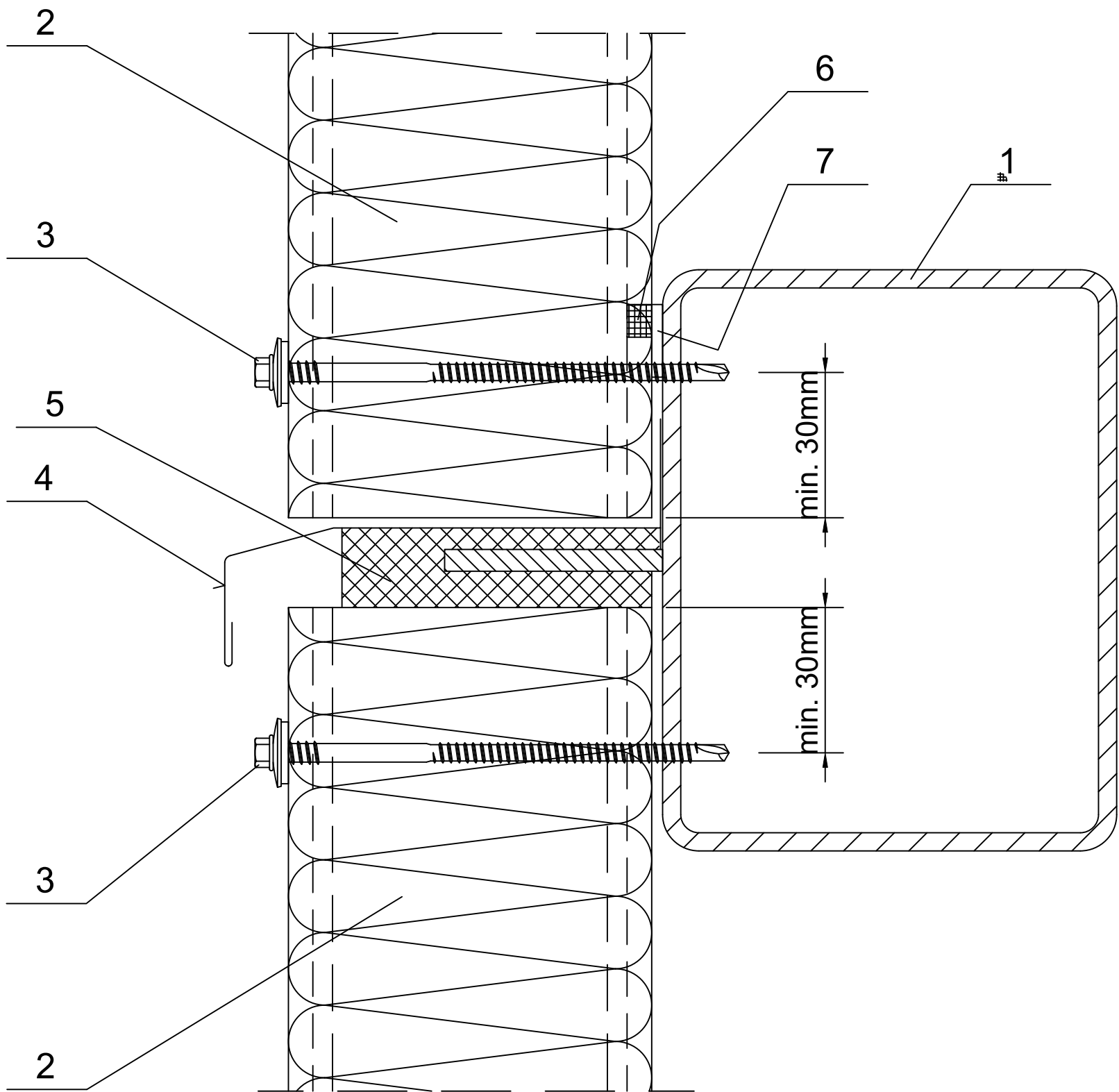




Contents of drawing

Longitudinal joint of Ruukki SP2B PIR
panels - tall buildings.
Vertical panel arrangement.

Date	Rev. date	Work nr.	Drw. nr.	Rev.
Drawn by Ruukki	Rev.	M27/S10	-	
Scale 1:2	Building		File nr. P2001/003-00039	



- 1. Steel sheeting rail acc. to engineering design of the structure
- 2. Ruukki SP2B PIR
- 3. Panel fastener for hot-rolled sheeting rail or for cold-bent sheeting rail
- 4. Custom ordered drip
- 5. Impregnated polyurethane sealant or expanding foam
- 6. Permanently elastic sealing compound in panel joint
- 7. 4x20 PIR self-adhesive sealant